



# Brockenhurst

WITH A SPACIOUS, CAREFULLY-CONSIDERED INTERIOR LAYOUT THAT AFFORDS ALL THE KEY FEATURES OF A LUXURY HOLIDAY HOME, THE BROCKENHURST OFFERS ALL THE COMFORT OF HOME AT TRULY INCREDIBLE VALUE.

The lounge offers a generous amount of comfortable sofa-style seating and a stylish feature fireplace, with co-ordinating TV unit and coffee table. Outlook French doors can be added to further enhance the front aspect, providing direct access to your outside space.

The kitchen boasts a large integrated fridge/freezer, a double cavity gas oven/grill and an attractive overhead peninsular display and storage area, while also allowing for a number of additional optional integrated appliances. What's more, where central heating is specified, all models offer a useful full height cupboard, perfect for storing coats or outdoor gear.

The bedrooms are comfortable, light and spacious, with the main bed featuring a mirrored dressing area and ample wardrobe space, plus a modern en-suite in the two bedroom model. The family shower room is both stylish and practical, and the three bedroom model boasts an additional separate WC.

The neutral wall coverings and soft furnishings used throughout allow for the addition of your own finishing touches to this model in terms of accent colours and accessories, thereby creating a truly distinctive and individual holiday home.

With its intelligent design and focus on offering exceptional value, the Brockenhurst is the smart choice for those searching for luxury at an affordable price.

Unless otherwise stated all Brockenhurst photography is of the 35 x 12 2 bedroom model shown with optional Outlook French doors, double glazing and central heating





For more information on the Brockenhurst scan here or visit [www.willerby.com](http://www.willerby.com)

TV, DVD player, scatter cushions and lamp not included



Scatter cushions, lamp, microwave and kettle not included  
Central heating optional extras



Central heating optional extra



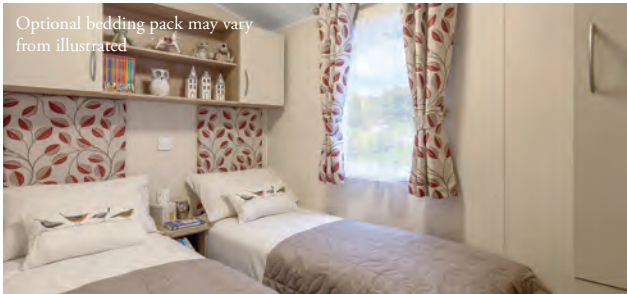


30

Kettle and toaster not included  
Integrated microwave optional extra



Central heating optional extra  
Optional bedding pack may vary from illustrated



Optional bedding pack may vary from illustrated



Family shower room



Family shower room  
Central heating optional extra



# Brockenhurst

## Standard Features

### Exterior/Structure

- Aluminium cladding
- Fully galvanised chassis
- Steel pantile roof sheets
- Moulded GRP front bargeboard
- Underfloor insulation and lagged water pipes
- PVCu gutters and fall-pipes
- Exterior light

### Interior Features

- Voile curtains to lounge and bedrooms
- Vaulted ceilings
- Energy efficient lighting

### Lounge

- Sofa-style fixed seating with fold-out occasional sofa bed and under-seat storage compartments
- Feature fireplace with stainless steel electric fire
- Freestanding TV cabinet
- Coffee table
- Wall-mounted mirror

### Kitchen

- Integrated 70/30 fridge-freezer
- Double cavity gas oven/grill with glass splashback
- Externally-vented stainless steel extractor fan
- Modern worktops with matching upstands
- Laminate style vinyl flooring

### Dining Area

- Freestanding pedestal dining table
- Fully upholstered dining chairs (two additional cylinder stools supplied in three bedroom model)
- Feature pendant lighting
- Full height storage cupboard (where central heating is specified in two bedroom models)
- Full height hallway storage cupboard (three bedroom model)

### Main Bedroom

- Kingsize bed with lift-up storage system (two bedroom models)
- Double bed with lift-up storage system (three bedroom model)
- Mirrored dressing area with cube stool (two bedroom models)
- Floating bedside cabinets and bedside wall lights
- Feature upholstered headboard
- En-suite WC (two bedroom models)

### Twin Bedroom(s)

- Single beds
- Feature upholstered headboards
- Bedside cabinet

### Family Shower Room

- Large shower enclosure with thermostatically controlled shower
- Porcelain sanitaryware
- Laminate style vinyl flooring
- Additional separate WC (three bedroom model)

## Regularly Specified Options

- Outlook French doors
- Energy efficient white PVCu double glazed windows and doors
- Exterior cladding - vinyl options
- 'Environmental Green' exterior and window frames
- Gas central heating system featuring high efficiency condensing combi boiler
- Gas fire
- Storage footstool
- Integrated MP3 sound system (see p71)
- Integrated washer/dryer
- Integrated dishwasher
- Integrated microwave
- Double bed to replace twin beds (second bedroom only)
- Bedding pack (see p71)
- European Specification (see p68)



### Icon Key

- |  |                             |  |                    |
|--|-----------------------------|--|--------------------|
|  | TV Space                    |  | Fold-out Bed       |
|  | Integrated MP3 Sound System |  | Electric Fire      |
|  | Fridge and Freezer          |  | Washer/dryer Space |
|  | Cooker                      |  | Microwave Space    |
|  | Dishwasher Space            |  | Storage Cupboard   |
|  | Wardrobe                    |  | Boiler             |



35 x 12 2 bedroom sleeps 6



38 x 12 2 bedroom sleeps 6



38 x 12 3 bedroom sleeps 8

**THERMAX** For insulation/window upgrades see page 73

Unless otherwise stated all Brockenhurst photography is of the 35 x 12 2 bedroom model shown with optional Outlook French doors, double glazing and central heating